

PULSAR

Process Measurement

Ultrasonic level
measurement
without
compromise



PULSAR

IMP



Self contained non contacting ultrasonic level measurement with digital echo processing for superb performance

A great range

Pulsar's IMP range is non-contacting ultrasonic level measurement without compromise. All-in-one self contained units with the benefit of digital echo processing specially designed for IMP. Program via the integral keypad or using **IMPview**, IMP's own PC software that lets you program the unit, view and download echo profiles and parameters.

There is an IMP to suit your application. 3m, 6m and 10m range versions are available with 2-wire intrinsically safe (IS) (pending), 2 and 3-wire IMP versions at each range. All Imps feature LCD displays and digital temperature measurement and compensation. IMP may be wired as a 2 or 3 wire device, each giving choices on outputs.



- Compact low profile self-contained intelligent level measurement
- Calibrate without compromising IP rating
- Small 1.5" entry thread (2" on 10m version)
- Simple menu led set-up
- High acoustic power with narrow beam angles
- 125mm deadband on 3m version
- Agitator avoidance as standard

IMP variants

	Range	2 / 3-wire configurable IMP	2-wire I.S. IMP
IMP 3	125mm - 3m	11-30 volts dc 4-key user interface LCD adjustable backlit display Digital temperature measurement 2 alarm relays (1A 30V) IMPview software download Digital echo processing and Location algorithms	I.S. certificate to ATEX EExia IIC T6 and FM (pending) 4-20mA loop powered 4-key user interface LCD display Digital temperature measurement IMPview software download Digital echo processing and Location algorithms.
IMP 6	300mm - 6m		
IMP 10	300mm - 10m		

see back page for full technical specifications





IMP applications

You can use IMP wherever you need reliable non-contacting level measurement: digital echo processing means Imp is perfect for **solids** or **liquids**. Sumps, tanks, silos. Anywhere you need a display telling you the level, or an analogue output to interface with your site control system or drive a display.

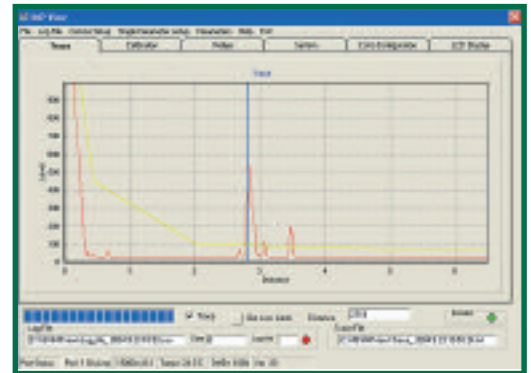
simple to install

The compact IMP is only 175mm high with a 130mm diameter. Cable glands are provided and IMP can be simply screwed into a 1.5" or 2" fitting (a 1.5" to 2" adaptor is available). High transducer power and tight beam angles, together with Pulsar's digital echo processing, makes IMP ideal for many "difficult" applications such as dusty or foamy environments, or where a tank has unavoidable intrusions. The integral display makes programming IMP extremely straightforward. IMP can be completely set up, without compromising the IP rating, using the integral keypad alone with no need for a PC. Optional IMPview PC software makes it easy to fine tune IMP's performance and "clone" any number of IMP units to the same settings if, for example, they are being used on a tank farm.

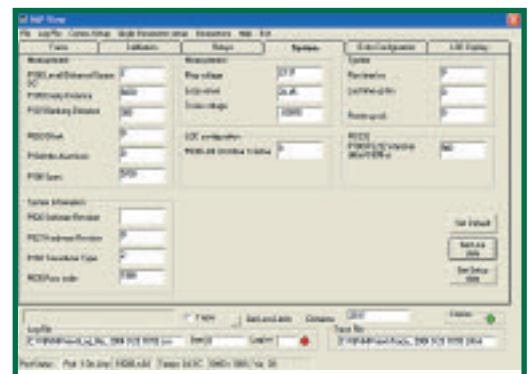
IMPview

IMPview is optional software that extends IMP's capabilities, allowing you to:

- **Download, analyse and store echo profiles.** A great way to see exactly what is happening in the application. Fine tuning for ultimate performance.
- **Set-up IMP.** All programming parameters are instantly visible in the IMPview programming screens. Program the IMP unit on a desktop before installation, or clone a number of IMPs to save valuable time.
- **Updates.** Future-proof your IMP! Pulsar's policy of continuous improvement means that we never stop developing our products. IMPview allows new firmware to be installed into your IMP units without even removing them from the application.
- **Flow measurement.** A flow curve may be added within IMPview to configure for simple level to flow linearisation



IMP echo trace



IMP programming screen

Part of the family

IMP is just one member of the Pulsar range of level and flow measurement equipment. For component ultrasonic level measurement without a display (ideal for larger distributed control applications) try **blackbox**, a solution that comprises an ultrasonic controller with a transducer that may be sited up to 1000m away. For complex control applications and volume calculations **Ultra 3 and Ultra 5** provide measurement from 125mm up to 40 metres on solids and liquids, depending on the transducer choice. Where pump control is required, Pulsar's **Ultra 3 and Ultra 5** units, using an advanced **software wizard**, are designed specifically for the task, with a host of sophisticated control routines developed within the water industry. Details of these products and many more can be found on our web site.



Technical specification

Physical:	Dimensions:	175mm overall height x 130mm diameter
	Cable entry:	2 off cable glands 4.5 - 10mm
	Mounting:	1.5" BSP or NPT (3m and 6m range versions), 2" BSP or NPT (10m version)
	Weight:	approximately 1Kg
Environmental:	Temp range (process):	-40°C - +85°C (-40°C - +75°C for I.S. version)
	Temp range (ambient):	-20°C - +65°C
	IP Rating:	IP67

Variants:	IMP 3	IMP 6	IMP 10
Beam angle (-3dB half power)	12° inclusive	10° inclusive	10° inclusive
Operating frequency	125kHz	75kHz	50kHz
Measurement range	0.125m-3m	0.3m-6m	0.3m-10m

Performance:	Digital echo processing	
	Input voltage range:	11-30V (17-30V for IS version), 3.5-22mA
	Accuracy:	± 0.25% or 6mm (whichever is greater)
	Resolution:	± 0.1% or 2mm (whichever is greater)
	4-20mA output:	resolution 5µA
	Temperature compensation:	via internal temperature sensor (±0.5°C accuracy)
	Level and volume conversion	are installed allowing linearisation for tank shapes

IMP may be wired as either a 2-wire or 3-wire, giving the features below:

2-wire configuration:	RS232 (RJ11 port) connection for diagnostics and software updates 4 digit LCD display 4 button keypad for parameter entry Power consumption: 3.5 - 22mA
3-wire configuration: (additional to 2-wire)	Backlit LCD display 0-10V analogue output 2 relays: single pole two way, 1A 30VDC/AC Power consumption with relays energised <60mA (less 12mA/relay not energised)
2-wire IS version:	Intrinsically safe to ATEX EExia IIC T6 & FM (pending)
PC Interface IMPview:	All parameters can be accessed and changed through IMPview software. Echo traces may be viewed on screen.

contact us

Pulsar Process Measurement Limited
Oak House, Bromyard Road, Worcester WR2 5HP United Kingdom
Tel: +44 (0) 870 6039 112, Fax: +44 (0) 870 6039 114
e-mail: sales@pulsar-pm.com, website: www.pulsar-pm.com

Pulsar Inc
PO Box 800, Shalimar, Florida 32579, USA
Tel: +1 850 609 1777, Fax: +1 850 651 4777
e-mail: info@pulsar-us.com, website: www.pulsar-us.com



Certificate No: 950136
Literature: IMP1 Feb 05

Represented by:

